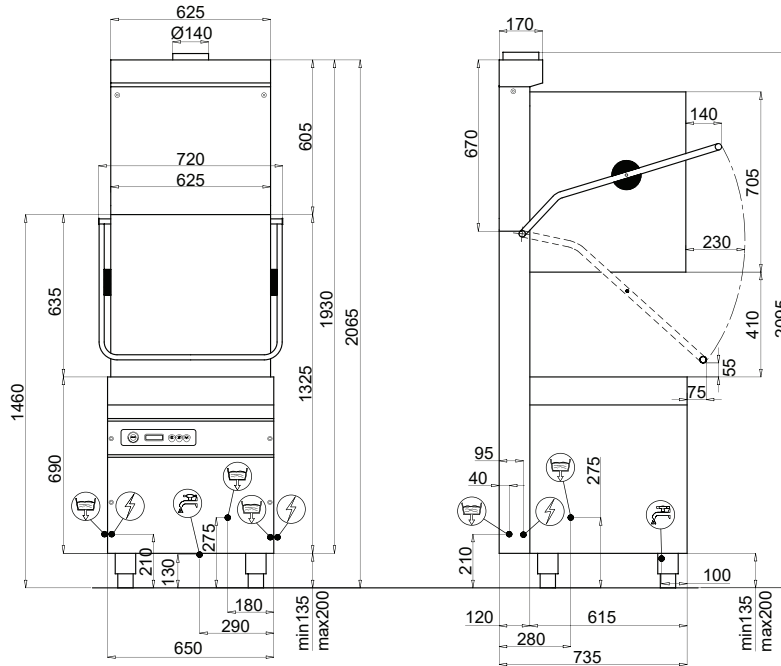


RH-60 HR PASS THROUGH DISHWASHER

The RH-60 HR pass through dishwasher is suitable for medium-large sized commercial kitchens. The Heat Recovery system gives an immediate saving of about 35% on energy costs.



**For bench work requirements, please refer to the next page.*

Standard Features

- Heat recovery
- Thermostop
- Hood operated start/stop functions
- Built-in detergent/rinse aid dispensers
- Soft touch panel showing temperature
- Built-in drain pump



**WATER
SAVING**



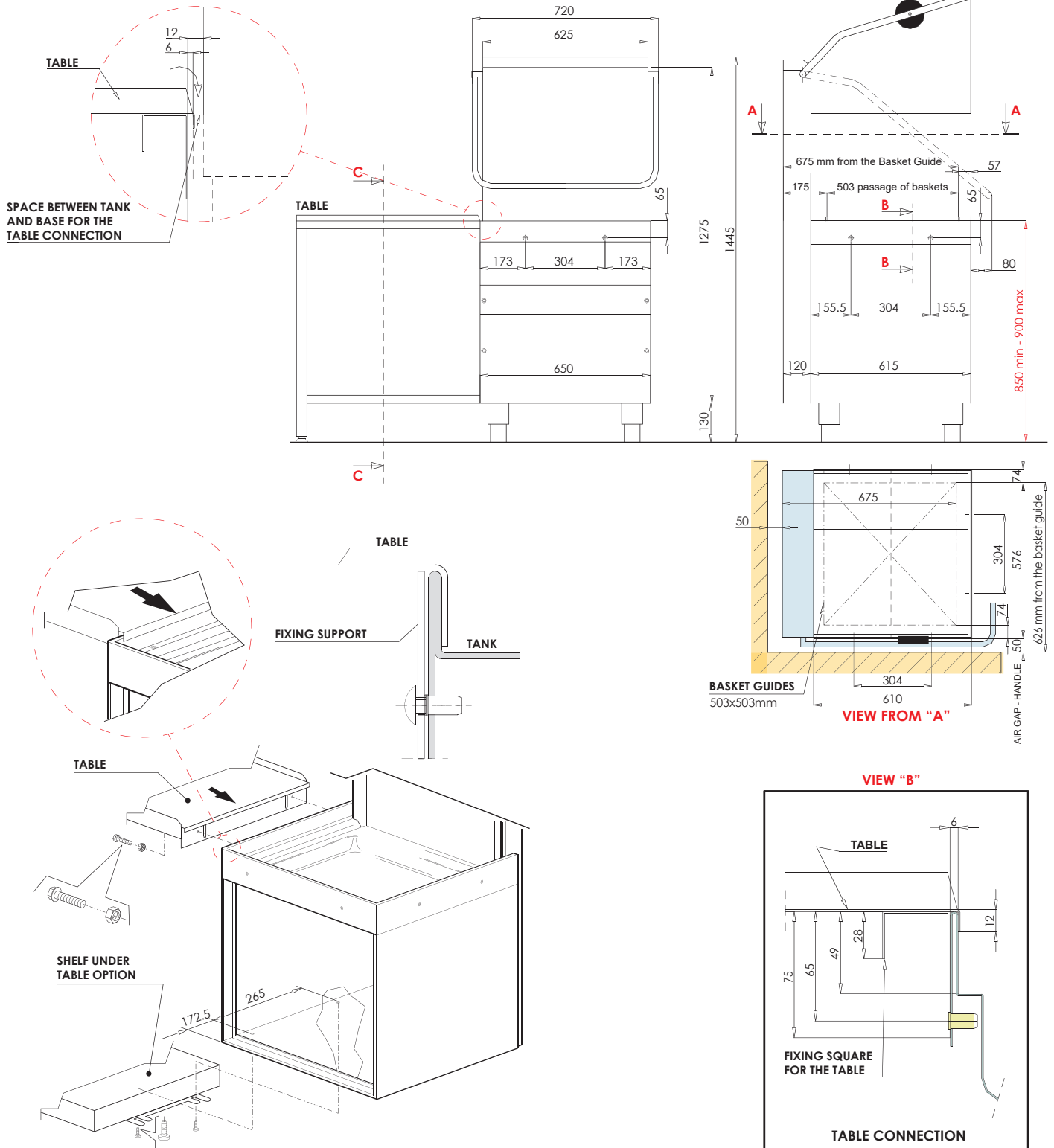
**ECO
FRIENDLY**



Power supply	415V 50 Hz
Total power	10.7KW
Total current	3 X 18.5 Amp
Wash tank capacity	20 ltrs
Water consumption (per cycle)	2.6 ltrs
Rinsing temp (approx)	85°C
Rack size	500mm x 500mm
Tallest washable item	410mm
Weight (empty)	145 kg
Drain hose diameter	Ø 24mm
Water connection (Cold*)	3/4" hose

*HR unit dictates water supplied to machine is Cold.

BENCH WORK DETAILS



Note: Dimensions shown are a guide only. Benching design/measurements may vary depending on individual site requirements. Rhima suggests final benching design is done with washer in place.