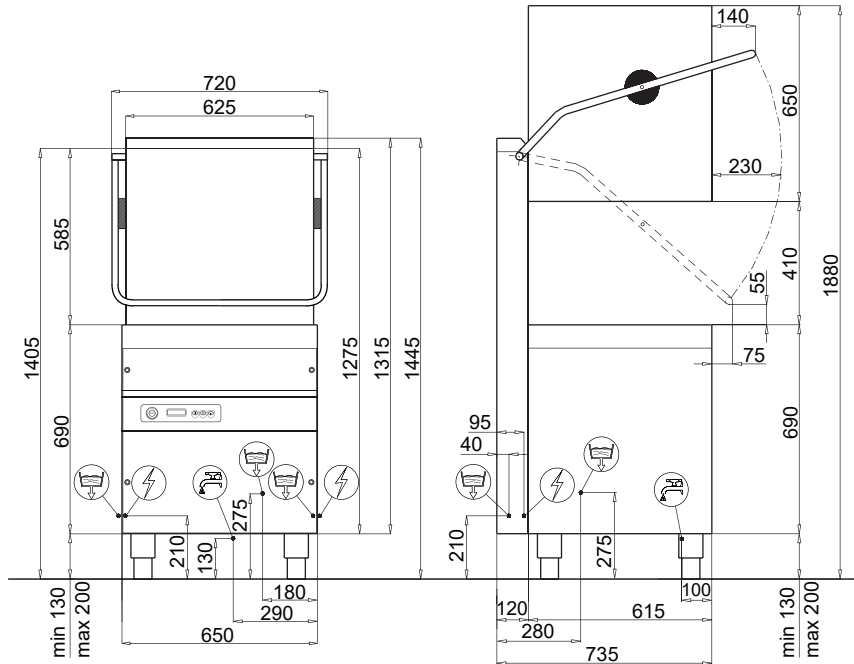


# RH-60 PASS THROUGH DISHWASHER

The RH-60 pass through dishwasher is suitable for medium-large sized commercial kitchens. The unique auto drain overflow system keeps the wash water cleaner than using traditional systems.



*\*For bench work requirements, please refer to the next page.*

## Standard Features

- Thermostop
- Self cleaning cycle
- Hood operated start/stop functions
- Built-in detergent/rinse aid dispensers
- Soft touch panel showing temperature
- Built-in drain pump



**WATER  
SAVING**



**ECO  
FRIENDLY**

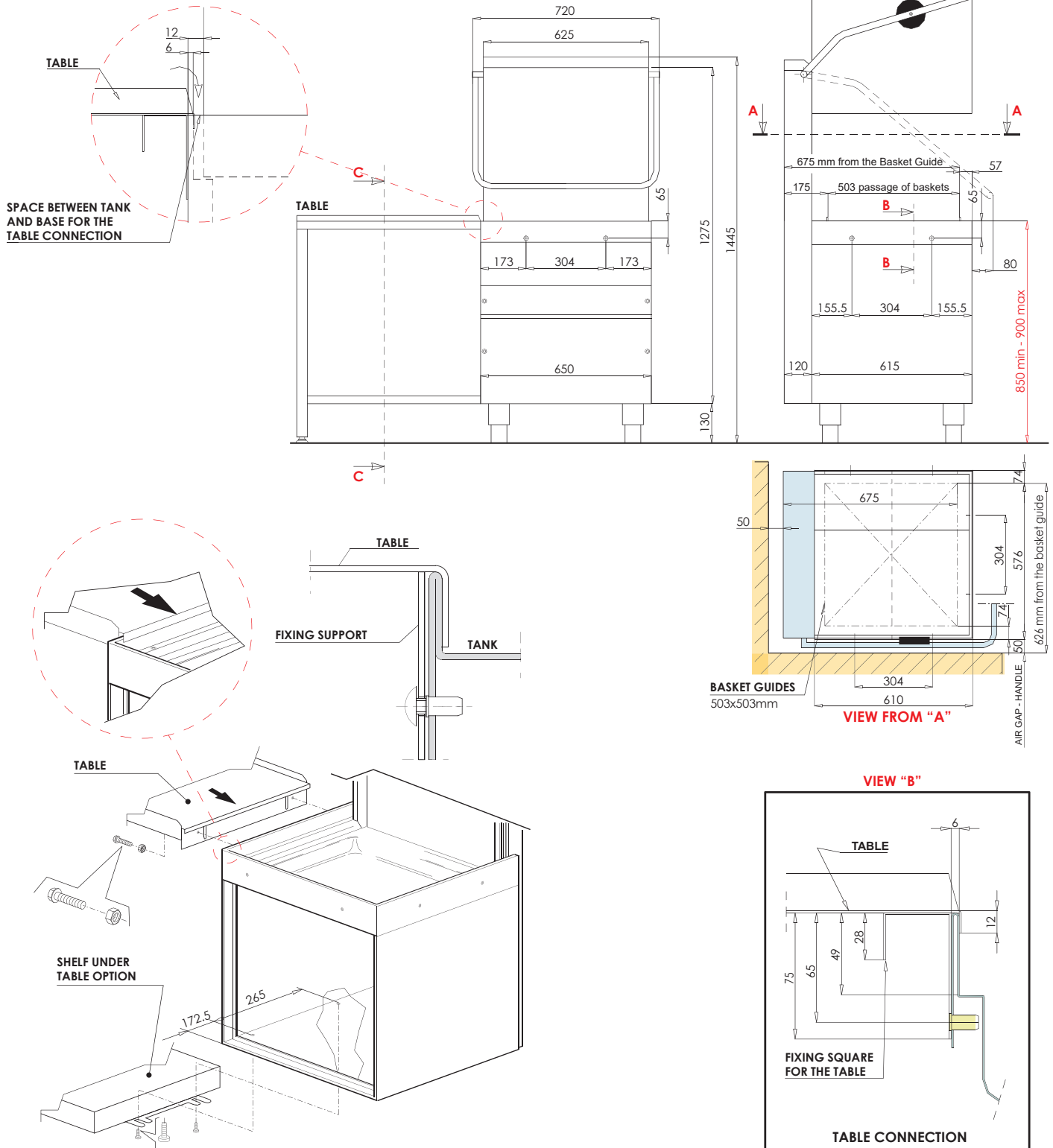


Power supply	415V 50 Hz
Total power	9.9KW
Total current	3 X 16 Amp
Wash tank capacity	20 ltrs
Water consumption (per cycle)	3.5 ltrs
Rinsing temp (approx)	85°C
Rack size	500mm x 500mm
Tallest washable item	410mm
Weight (empty)	125 kg
Drain hose diameter	Ø 24mm
Water connection (Hot*)	3/4" hose

\*Connect to hot water for optimum performance



# BENCH WORK DETAILS



**Note: Dimensions shown are a guide only. Benching design/measurements may vary depending on individual site requirements. Rhima suggests final benching design is done with washer in place.**